

# Suite No.3

## Lord Strathcona's Library.

### Suite overview

Suite Three is a two bedroom suite and ideally set for those occasions where a second bedroom is of benefit and is positioned on the ground floor. This sizable suite is 137 square metres in scale and is composed of a Master bedroom, second bedroom, bathroom, study and generous private sitting room. All rooms enjoy panoramic views of Loch Leven and are ideally situated to enjoy the spectacular Highland sunsets.

### Private Sitting Room/Library

One of the key defining features of Glencoe House's elegant accommodation is your personal private sitting room, which creates the ultimate retreat and hideaway. As the name suggests, the private sitting room of this suite was Lord Strathcona's library and is 42 square metres in size. Decorated in a warm red colour, this room lends itself to relaxation and contemplation. The room contains a striking original jade coloured marble open fireplace, with a wood burning stove, which can be lit to give a warm glow of an afternoon or in the evening while enjoying a drink from the generously stocked 'maxi' bar.

### The Master Bedroom

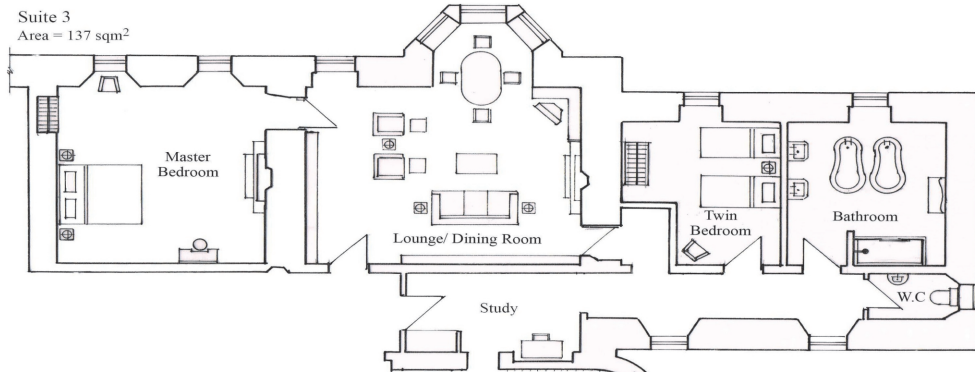
The well proportioned Master bedroom is 31 square metres and gains from two large windows that look down Loch Leven, which is a remarkable way to begin your day. The original period features are shown off to good effect in the evening by the twelve branch crystal chandelier. The original period features include a large marble open fireplace and intricately carved oak mantle piece, oak panelling, solid oak flooring, and ornate plaster ceiling. The "Glencoe House Rejuvenating Bed Concept" allows for a restful and restoring night and is tailored to your every need. The antique mahogany dressing table and wardrobe add the finishing touches to an elegant and tasteful room.

### The Second Bedroom

Originally Lord Strathcona's study, this room is also positioned to enjoy the vista of Loch Leven. The second bedroom is still of a good proportion at 16 square metres and can accommodate either a super king size bed or two twin beds depending on guest requirements. The original cornices are still in place and this room is lit by crystal chandelier.

### The Bathroom

At 18 square metres, this bathroom offers extravagance, opulence and indulgence in equal measures. There is no need to negotiate who bathes first as this bathroom boasts twin free standing slipper baths that stand side by side with only a champagne bucket and glasses between them. The crystal chandelier and marble top wash stand continues the sumptuous feel of this room. The bathroom also contains the Glencoe House energising Shower Concept. The room also features 'his' and 'hers' wash hand basins for that extra touch. The bathroom toiletries extend the sense of opulence with the generously full sized bottles of Aveda and Kiehl's products.



## Suite No.3

